



Van Wamel B.V.



THE 'PERFECT' SOLUTION
**AGRICULTURE &
GREEN SPACE**

ROTARY TOPPERS

FLAIL MOWERS

MULTI MOWERS

SIDE FAIL MOWERS

LARGE SURFACE FLAIL MOWERS

SOLO SWING MOWING DISKS

www.vanwamel.nl



TABLE OF CONTENTS

- Rotary mowers
- Solo-Swing mowing disks
- Flail mowers overview
- Compact flail mowers
- Standard flail mowers
- Heavy duty flail mowers
- Multi mowers
- Side flail mowers
- Large surface flail mowers

MACHINEFABRIEK VAN WAMEL B.V.











- 3 PERFECT machines have been designed and built in Beneden-
- 5 Leeuwen completely under own management since 1947.
- 7 The manufacturing process is characterized by using the very
- 10 best materials/components and state-of-the-art production
- 11 methods, The manufacturing process is characterized by
- 12 using the very best materials/components and state-of-the-
- 11 art production methods. Our team of 3D designers utilises the
- 12 most advanced simulation techniques in order to guarantee
- 13 optimal functionality and operation.

Externally purchased parts such as bearings, PTO shafts and gearboxes are only procured from suppliers that can meet the high quality standards that we demand for the PERFECT line of machines.

All these factors contribute to the extremely high and consistent reliability for which PERFECT flail and rotary mowers are renowned all over the world.

In addition, in order to guarantee long-term operational dependability, and to keep break-downs and downtime to a minimum, PERFECT offers an excellent streamlined spare parts delivery service, maintains large stocks and provides highly effective technical support.

Key to symbols

	Standard 3-point rear-mount		heavy-duty work
	Standard front-mount and rear-mount		PTO 540 rpm
	Standard 3-point rear-mount, front-mount option		PTO 1000 rpm
	Standard mowing/ topping		0.9 kg/2.4 lbs or flex-flails
	Heavier mowing		0.9 kg, 2.2 kg, or Combi-flails

ROTARY MOWERS – TOPPERS



PERFECT ROTARY MOWERS

PERFECT rotary mowers owe their highly renowned cutting capacity and extremely long lifespan to the following features:

- The V-belt drive, which prevents the gearbox and PTO shaft against overloading
- The long, profiled skids, which enable working speeds up to 6.5 mph/10 km/h
- For the heaviest jobs, a gearbox driven mower is available (LK Series)



Swing-away blades and/or support saucers



LB with hydraulic offset



Front mount



ROTARY MOWERS – TOPPERS

LB series



- Sturdy rotary mower for pastures, parks and camp sites
- Profiled skids for excellent terrain adjustment
- Standard side shift (LB-245/275 with connecting rod)
- Widely overlapping blades



Options

- Hydraulic offset
- Pulled front model
- Support saucer/rear roller for working on more uneven terrain
- Adjustable support wheels

Technical information	LB-185	LB-245V	LB-275V	LB-360
Working width (cm)	185	245	275	360
Speed:				
- PTO shaft (rpm)	540	540	540	540
- rotor spindles (rpm)	1685	1685	1685	1540
Required power, min. (kW/HP)*	18/25	26/35	29/40	33/45
Rotor spindles (number)	2	3	3	4
Total width (cm)	194	258	284	374
Cutting height (cm)	4-14	4-14	4-14	4-14
Tractor coupling system (cat.)	I + II	(I) + II	(I) + II	I + II
Weight (kg)	360	460	510	670
Offset from tractor centre:				
- minimum (mid-mount)	93	122	138	183
- maximum manual (standard)	135	205	220	230
- maximum parallelogram (option)	135	200	218	224

* Depending on the work to be carried out. A PTO shaft with an overload protection clutch must be used with oversized tractors.

ROTARY MOWERS – TOPPERS



GEARBOX DRIVEN

LK Series



- Mows high/dense grass, fallow land, natural terrain
- Rubber shock absorbers on the input and output gearbox shafts + PTO shaft with an overrun and overload protection clutch to safeguard the driveline

Options

- Rear roller for optimal terrain adjustment
- Hydraulic offset
- Adjustable support wheels

Technical information	LK-185	LK-215	LK-245	LK-275
Working width (cm)	185	215	245	275
PTO power required power transmission at 540 rpm (kW/HP)	37/50	41/55	45/60	56/75
Number of rotors	2	2	3	3
Cutting height (cm)	4-14	4-14	4-14	4-14
Transport width (cm)	195	225	255	285
Maximum offset from tractor middle line (cm)	141	156	171	186
Weight (kg)	470	490	625	700



OFFSET MOWING

Model SV2-275



- Based on the LB-275
- Ultra-heavy-duty headstock for lasting stability
- PTO shaft with overrun clutch
- Articulation range +45 to -45 degrees
- Offset range 160 cm

Options

- Support saucer/rear roller for uneven terrain

Technical information	SV2-275
Working width (cm)	275
Speed:	
- PTO shaft (rpm)	540
- rotor (rpm)	1685
Required power, min. (kW/HP)*	29/40**
Rotor spindles (number)	3
Cutting height (cm)	4-14
Tractor coupling system (cat.)	II
Weight (kg)	675
Offset from tractor centre	
- minimum (cm)	225
- maximum (cm)	385

* Depending on the work to be carried out. A PTO shaft with an overload protection clutch must be used with oversized tractors.

** For a minimal level of stability a tractor of min. 44 kW/60 hp is recommended.

SOLO-SWING MOWING DISKS



PERFECT SOLO-SWING

Solo-Swing mowing disks are hydraulically driven and specifically designed for mowing around fence posts, trees and under solar panels, etc.

- Sturdy, compact construction
- Height of disc/motor 23/32 cm (at a cutting height of 6 cm)
- Heavy-duty swing-away blades
- Various mounting possibilities
- Easily adjustable resistance with springs
- 30 l/min oil flow required
- Articulation range and throw-out angle adjustable from 0 to 15 degrees
- Standard bearing-mounted support saucer under cutter head

Options

Solo-Swing models can be fitted with a mechanical-hydraulic feeler for mowing around saplings/posts.



SOLO-SWING ATTACHMENT MODEL

SZA Series

- For mounting on rotary mower/flail mower
- Fast mounting and unmounting
- Available with attachment plate for wheel loader

Technical information	SZA-500	SZA-600	SZA-850
Working width (cm)	50	60	85
Required constant oil flow (l/min)	30	30	30
Required oil pressure (bar/psi)	±65/940	±80/1160	±125/1810
Motor stroke (cc)	16	16	17,9
Articulation range/throw-out angle (°)	0-15	0-15	0-15
Required hydraulic connections on tractor	1x double acting + 1x free flow return	1x double acting + 1x free flow return	1x double acting + 1x free flow return
Weight (kg)	85	100	110

SOLO-SWING MOWING DISCS



FRONT MOUNT PARALLELOGRAM

SZF/SZL Series

- With hydraulic parallelogram offset
- With tandem wheels
- No front lift required
- Working width 60 cm

SZF-600: for narrow-gauge tractor, maximum offset 165 cm

SZL-600: for standard tractors, maximum offset 210 cm

SZX Series

- Working width 85 cm
- For front lift

Options

- Three-point headstock for tractor front lift (model SZF/SZL)
- Headstock for three-point rear-mount system (model SZX)



SZX - 850

Technical information	SZF-600	SZL-600	SZX-850
Working width (cm)	60	60	85
Required constant oil delivery (l/min)	30	30	30
Required oil pressure (bar/psi)	±80/1160	±80/1160	±150/2175
Motor stroke (cc)	16	16	17,9
Articulation range/throw-out angle (°)	0-15	0-15	0-15
Required hydraulic connections on tractor	2x double-acting valve + free flow return	2x double-acting valve + free flow return	2x double-acting valve + free flow return
Maximum offset from tractor centre (cm)	165	210	245
Weight (kg)	175	200	275



3-POINT REAR MOUNT

SZS Series

- For tractor 3-point (rear mount) cat. I+II
- Quick and easy mounting and unmounting
- Working width 60 or 85 cm
- Linear hydraulic offset
- With tandem wheels for terrain adjustment



Technical information	SZS-600	SZS-850
Working width (cm)	60	85
Required constant oil delivery (l/min)	30	30
Required oil pressure (bar/psi)	±80	150
Motor stroke (cc)	16	17,9
Articulation range/throw-out angle (°)	0-15	0-15
Required hydraulic connections on tractor	2x double-acting valve + free flow return	2x double-acting valve + free flow return
Maximum offset from tractor centre (cm)	210	225
Weight (kg)	175	185

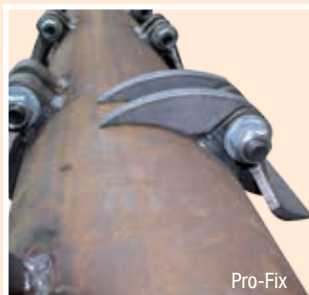
FLAIL MOWERS



FLAIL MOWERS

PERFECT flail mowers are characterised by their high-quality construction and low maintenance requirements. The following features contribute to this:

- Ultra-sturdy construction
- Flail shaft with maximum stability, balanced twice before and after the flail mounting
- Optimal shredding of even the toughest vegetation with a minimal power requirement
- Excellent terrain adjustment
- Mown material is thrown out and spread over the rear roller
- The roller bearings are fitted to the exterior for quick and easy maintenance. Covers limit the penetration of dirt and moisture, which significantly increases the lifespan of the bearings
- Most models fitted with automatically tensioned V-belts as standard
- Various flail options
- Standard Walterscheid PTO shaft
- Possibility to fit the flail rotor with Pro-Fix reinforcements for increased protections against stones and other objects



COMPACT FLAIL MOWERS



LIGHTER FLAIL MOWER

'JUNIOR' Series



- Light yet stable construction for use with smaller tractors
- For hobby farmers, parks, grassland, etc.
- Excellent terrain adjustment, rear roller located close to flail shaft, cleaned by flails
- Manoeuvrable, reliable and low-maintenance
- Fitted with 0.9 kg flails as standard
- For tractors up to 60 HP

Options

- Hydraulic offset

Technical information	KJ-120	KJ-150	KJ-180	KJ-210
Working width (cm)	120	150	180	210
Speed:	540	540	540	540
- PTO shaft (rpm)				
- flail shaft (rpm)	2100	2100	2100	2100
Required power, min. (kW/HP)*	20	23	27	32
Flails 0.9 kg (number)	14	16	18	22
Total width (cm)	136	166	196	226
Tractor coupling system (cat.)	I + II	I + II	I + II	I + II
Weight (kg)	305	325	350	460
Offset from tractor centre line:				
• fixed 3-point attachment plate (standard) cm				
• hydraulic offset (optional)				
- minimum (cm)	40	530	83	113
- maximum (cm)	91	104	134	164



COMPACT FLAIL MOWER

KP Series



- Compact, sturdy construction
- For pastures, parks, etc.
- Excellent terrain adjustment, rear roller located close to flail shaft
- Manoeuvrable, reliable and low-maintenance
- Flails attached with 20 mm bolts and replaceable bushings
- Rear roller bearings with covers
- For tractors over 25 HP

Options

- Front mount 540 or 1000 rpm, including gearbox with integrated overrun clutch
- Hydraulic offset
- Various flail options (see page 15)

Technical information	KP-150	KP-180	KP-210	KP-240
Working width (cm)	150	180	210	240
Speed:				
- PTO shaft (rpm)	540	540	540	540
- flail shaft (rpm)	2100	2100	2100	2100
Required power, min. (kW/HP)*	18/25	21/28	25/34	30/41
Flails 0.9 kg (number)	16	18	22	24
Total width (cm)	172	202	232	262
Tractor coupling system (cat.)	I + II	I + II	I + II	I + II
Weight (kg)	425	465	530	605
Offset from tractor centre line:				
• fixed 3-point attachment plate (standard) cm	80	110	140	154
• hydraulic offset (optional)				
- minimum (cm)	55	85	115	130
- maximum (cm)	105	135	165	180

* Depending on the work to be carried out. A PTO shaft with an overload protection clutch must be used with oversized tractors.

STANDARD FLAIL MOWERS



ALL ROUND FLAIL MOWER

KW Series



- Ideal for topping road side verges, fallow land with light vegetation, green manure crops, etc.
- Solid construction, large flail shaft/rear roller
- Mechanical offset 48 cm
- Gearbox (540 t/min) with integrated overrun clutch
- Automatic V-belt tensioning
- Excellent price/quality ratio

Options

- Hydraulic offset
- Wear plate
- Various flail options (see page 15)

Technical information	KW-245	KW-270	KW-300
Working width (cm)	245	270	300
Speed:			
- PTO shaft (rpm)	1000	1000	1000
- flail shaft (rpm)	1890	1890	1890
Minimum tractor power (kW/HP)*	33/45	40/55	48/65
Flails 0.9 kg (number)	24	28	32
Total width (cm)	261	286	316
Tractor coupling system (cat.)	II	II	II
Weight (kg)	830	875	920
Offset from tractor centre line:			
- minimum (cm)	88	113	143
- maximum (cm)	135	160	190



ALL ROUND FRONT/REAR FLAIL MOWER

KR Series



- Solid construction, large flail shaft/rear roller
- Standard hydraulic offset 48 cm
- 1000 rpm gearbox with double overrunning clutch that accepts both RH and LH rotation
- Automatic V-belt tensioning
- Excellent price/quality ratio

Options

- Wear plate
- Various flail options (see page 15)

Technical information	KR-245	KR-270	KR-300
Working width (cm)	245	270	300
Speed:			
- PTO shaft (rpm)	540	540	540
- flail shaft (rpm)	1890	1890	1890
Minimum tractor power (kW/HP)*	33/45	40/55	48/65
Flails 0.9 kg (number)	24	28	32
Total width (cm)	261	286	316
Tractor coupling system (cat.)	II	II	II
Weight (kg)	930	975	1020
Offset from tractor centre line:			
- minimum (cm)	88	113	143
- maximum (cm)	135	160	190

* Power requirement depends on the work to be carried out. A PTO shaft with an overload protection clutch must be used with oversized tractors.

HEAVY DUTY FLAIL MOWERS



HEAVY DUTY FLAIL MOWER WITH ADJUSTABLE HOOD

KT Series



- Ultra-heavy-duty construction, large flail shaft/rear roller
- Super spacious frame with adjustable rear cover
- For mowing fallow land, green manure crops, corn stalks stubble, etc.
- 1000 rpm drive

Options

- Various flail options (see page 15) e.g. 2.2 kg HD or 2.7 kg combi-flails
- Mechanical/hydraulic offset
- Wear plate
- Large, solid rubber swivelling wheels instead of rear roller
- Front headstock
- 3D-Flex headstock; hydraulic 3D-levelling, super-offset (1100 mm) left and right, best possible ground contour following

Technical information	KT-245	KT-270	KT-300	KT2-320
Working width (cm)	245	270	300	320
Speed:				
- PTO shaft (rpm)	1000	1000	1000	1000
- flail shaft (rpm)	2100	2100	2100	1750
Required power, min. (kW/HP)*	40/55	48/65	55/75	62/85
Flails standard 0.9 kg (2.2 kg)	24 (16)	28 (16)	32 (18)	32 (20)
Transport width (cm)	274	299	329	349
Tractor coupling system (cat.)	II	II	II	II
Weight (kg)	900	970	1030	1320
Offset from tractor middle line:				
• fixed 3-point attachment plate (standard) cm	143	168	150	160
• hydraulic offset (optional)				
- minimum (cm)	115	140	122	132
- maximum (cm)	172	197	180	190



HEAVY DUTY FRONT/REAR FLAIL MOWER

KM Series



- Ultra-heavy-duty construction, large flail shaft/rear roller
- Standard hydraulic offset 57 cm
- 1000 rpm gearbox with overrun clutch that accepts both RH and LH rotation
- Ultra-strong headstock with replaceable slide plates

Options

- Various flail options (see page 15) e.g. 2.2 kg HD or 2.7 kg combi-flails
- Wear plate
- Model for combined mowing/ploughing: extra-large offset, swinging arm attachments, wide-angle PTO shaft

Technical information	KM-220	KM-245	KM-270	KM-300
Working width (cm)	220	245	270	300
Speed:				
- PTO shaft (rpm)	1000	1000	1000	1000
- flail shaft (rpm)	2200	2200	2200	2200
Required power, min. (kW/HP)*	35/48	40/55	48/65	55/75
Flails standard 0.9 kg (2.2 kg)	24 (16)	24 (16)	28 (16)	32 (18)
Transport width (cm)	247	272	297	327
Tractor coupling system (cat.)	II	II	II	II
Weight (kg)	1000	1030	1120	1200
Hydraulic offset from tractor middle line:				
- minimum (cm)	91	116	141	123
- maximum (cm)	148	173	198	180

* Depending on the work to be carried out. A PTO shaft with an overload protection clutch must be used with oversized tractors.

MULTIMOWERS



STURDY MULTIMOWER

ZW Series



- Versatile all-round mower for field edges, pastures, roadside verges, sides of ditches, etc.
- Sturdy construction, double-skin frame in all the necessary places
- Internally reinforced headstock and arms for lasting stability
- Extreme offset/mowing range by locating the gearbox on the frame exterior
- Walterscheid PTO shaft with overrun clutch and star profile
- Collision protection: Spring system in arm attachments



Collision protection in offset arms

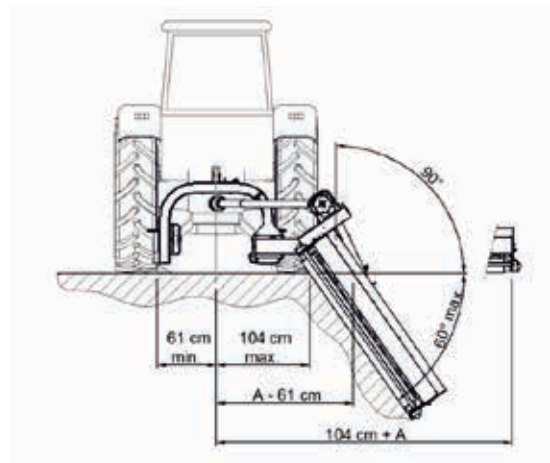


Internally reinforced headstock

Options

- Front-mount 1000 rpm
- Left hand version
- Various flail options (see page 16)

Technical information	ZW-150	ZW-180	ZW-210	ZW-240
Working width (cm) (A)	150	180	210	240
Speed:				
- PTO shaft (rpm)	540	540	540	540
- flail shaft (rpm)	2075	2075	2075	2010
Required power, min. (kW/HP)*	37/50**	44/60	51/70	59/80
Flails 0.9 kg (number)	16	18	22	24
Transport width (cm)	140	140	140	140
Tractor coupling system (cat.)	II	II	II	II
Weight (kg)	735	780	840	900
Offset from tractor middle line:				
- minimum (cm)	90	120	150	180
- maximum (cm)	255	285	315	345
Offset from tractor middle line (front-mount models)				
- minimum (cm)	115	145	175	205
- maximum (cm)	225	255	285	315



* Depending on the work to be carried out. A PTO shaft with an overload protection clutch must be used with oversized tractors.

** For a minimal level of stability a tractor of min. 44 kW/60 hp is recommended

SIDE FLAIL MOWERS

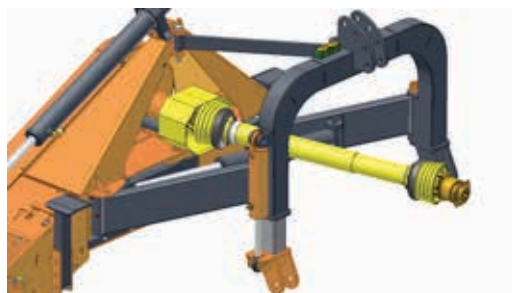


PROFESSIONAL SIDEFLAIL MOWER

ZF2 Series



- For professional/intensive use on roadside verges, field edges, mowing green manure crops or maize stubble, etc.
- Extremely strong; double-skin frame in all the necessary places
- Driven through a 5 fold Powerbelt and reinforced gearbox
- A flexible rubber coupling between the gearbox and flail shaft eliminates peak strokes on the drive system
- 1000 rpm drive
- Unique, extremely reliable collision protection integrated in main frame

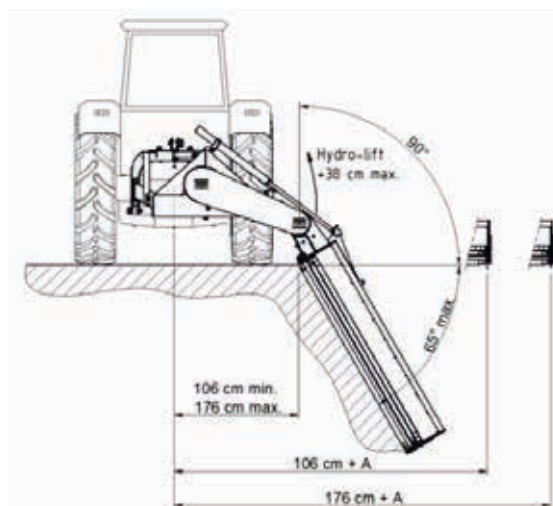


Hydro-lift* option

Options

- Various flail options (see page 16) e.g. 2.2 kg HD or 2.7 kg combi-flails
- Hydro-lift for mowing shallow ditches with a large mowing head
- Front-mounted model and/or left hand side model

Technical information	ZF2-150	ZF2-180	ZF2-210	ZF2-240
Working width (cm) (A)	150	180	210	240
Speed:				
- PTO shaft (rpm)	1000	1000	1000	1000
- flail shaft (rpm)	2230	2230	2230	2230
Required power, min. (kW/HP)*	44/60*	50/68*	55/75*	65/88**
Flails standard 0.9 kg (2.2 kg)	16 (9)	18 (12)	22 (12)	24 (16)
Transport width (cm)	187	187	187	187
Tractor coupling system (cat.)	II	II	II	II
Weight (kg)	890	940	990	1050
Offset from tractor middle line				
- minimum (cm)	255	285	315	345
- maximum (cm)	325	355	385	415



* Depending on the work to be carried out. A PTO shaft with an overload protection clutch must be used with oversized tractors.

** For a minimal level of stability a tractor of min. 58 kW / 80 hp (**69 kW/100 hp is recommended

LARGE SURFACE FLAIL MOWERS



DUAL MOWER WITH MAXIMUM CAPACITY

Model RX-620



- For mowing green manure crops, fallow land, corn stalks, airfields, etc.
- Two heavy-duty flail mowers with wide overlap
- Fitted with 2.2 kg heavy-duty flails as standard
- Flail shaft diameter 273 mm
- Heavy, trailed frame, mowers with swinging suspension
- Ground pressure relief adjustable with heavy coiled springs
- 1000 rpm drive
- Adjustable rear hoods
- Suitable for tractors over 150 HP/113 kW

Options

- Continuously variable adjustment of cutting height
- Hydraulic/pneumatic brake system
- Wear plates
- Adjustable working width 5.20 to 6.20 m
- Various flail options (see page 16) e.g. 2.7 kg Combi-flails



Technical information	RX-620
Working width (cm)	620
Speed:	
- PTO shaft (rpm)	1000
- flail shaft (rpm)	1800
Required power (kW/HP)	113/150
Flails standard 2.2 kg/flail	40
V-belts	2 x 5 Red Power
Required hydraulic connections	2 x EW
Wheels	15.0 / 55-R17
Coupling system (cat.)	III
Weight (kg)	3420
Transport	
- height (cm)	390
- width (cm)	220

LARGE SURFACE FLAIL MOWERS



HEAVY DUTY TRIPLE FLAIL MOWER

KX-860



- Heavy carrying frame with two 3.20-m side mowers
- Centre mower for front mounting or connecting behind the side mowers
- Drive 1000 rpm
- Side mowers driven by five-fold Powerbelts
- Diameter of flail shafts 273 mm (central mower 219 mm)
- Fitted with 2.2 kg heavy-duty flails as standard
- Various attachment possibilities (including, for example, reverse drive)
- Hydropneumatic ground pressure relief

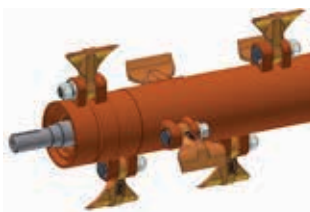
Options

- Trailed model
- Various flail options (see page 16) e.g. 2.7 kg flails
- Electronically controlled hydraulic system operation, including ground-pressure relief

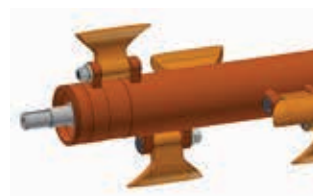


Technical information	KX-860
Total working width (cm)	860
Required power, min. (kW/HP)*	185/250
Speed: PTO shaft (rpm)	1000
Transport width (cm)	296
Flails 2.2 kg (number)	56
Tractor coupling system (cat.)	III/IV
Weight (3-point model) (kg)	4700
Weight (pulled model) (kg)	5460
Transport height (3-point model) (cm)	390
Transport height (pulled model) (cm)	400

Flails



0,9 kg: Straight, continuous cutting edge that guarantees a uniform cutting height. Ideal for grass, green manure crops and other light crop stubble.

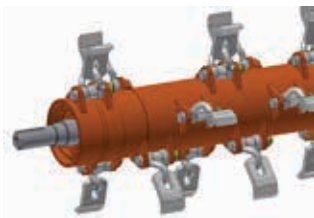


2,2 kg: Universal heavy flail, less chance of damage, for corn stalks or use in extremely heavy conditions.

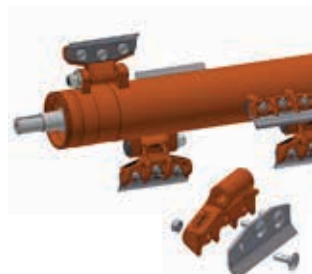
FLAIL MOWERS

Series	'Junior' KJ				KP				KW			
Models	KJ-120	KJ-150	KJ-180	KJ-210	KP-150	KP-180	KP-210	KP240	KW-245	KW-270	KW-300	
Working width (cm)	120	150	180	210	150	180	210	240	245	270	300	
Usage capacity												
Headstock standard (options)	3-point rear				3-point rear (front)				3-point rear			
Tractor coupling system (cat.)	I/II				I/II				II			
Speed (rpm)												
PTO shaft	540	540	540	540	540	540	540	540	540	540	540	
Flail shaft	??	??	??	??	2100	2100	2100	2100	1890	1890	1890	
Flail shaft												
Diameter A (mm)	140	??/??	??/??	??/??	140	140	140	160	219	219	219	
Diameter B (mm)	407	407	407	407	407	407	407	427	485	485	485	
Wall strength C (mm)	10	10	10	10	12,5	12,5	12,5	12,5	10	10	10	
Number of V-belts	3	3	3	3	3	3	3	3	4	4	4	
V-belt tensioning	bolt	bolt	bolt	bolt	bolt	bolt	bolt	bolt	automatic	automatic	automatic	
Minimum tractor power (kW/HP)	20	27	32	34	18/25	21/28	25/34	45/33	33/45	40/55	48/65	
Flails (number)												
0.9 kg (standard)	14	16	18	22	16	18	22	24	24	28	32	
Flex-flails (option)	-	-	-	-	32	40	48	54	55	61	68	
Transport width (cm)	140	170	200	230	170	200	230	260	261	286	316	
Offset from tractor middle line												
Minimum (cm)	40	53	83	113	55	85	115	130	88	113	143	
Maximum (cm)	91	104	134	164	105	135	165	180	135	160	190	
Cutting height (cm)	1,0 - 7,5				0 - 11,5				3 - 13			
Weight (kg)	305	325	350	390	425	465	530	605	830	875	920	

Series	KR			KT				KM			
Models	KR-245	KR-270	KR-300	KT-245	KT-270	KT-300	KT-320	KM-220	KM-245	KM-270	KM-300
Working width (cm)	245	270	300	245	270	300	320	220	245	270	300
Usage capacity											
Headstock standard (options)	3-point front and rear			3-point rear (front)				3-point front and rear			
Tractor coupling system (cat.)	II			II				II			
Speed (rpm)											
PTO shaft	1000	1000	1000	1000	1000	1000	1000	1000	1000	1000	1000
Flail shaft	1890	1890	1890	2100	2100	2100	1750	1850	1850	1850	1850
Flail shaft											
Diameter A (mm)	219	219	219	219	219	219	273	178	219	219	219
Diameter B (mm)	485	485	485	485	485	485	540	445	485	485	485
Wall strength C (mm)	10	10	10	12,5	12,5	12,5	12,5	14,2	10	10	10
Number of V-belts	4	4	4	4	4	4	5	4	4	4	4
V-belt tensioning	automatic	automatic	automatic	automatic	automatic	automatic	automatic	automatic	automatic	automatic	automatic
Minimum tractor power (kW/HP)	33/45	40/55	48/65	40/55	48/65	55/75	62/85	35/48	40/55	48/65	55/75
Flails (number)											
0.9 kg (standard)	24	28	32	24	28	32	32	22	24	28	32
Flex-flails (option)	55	61	68	-	-	-	-	-	-	-	-
2.2 kg (option)	-	-	-	16	16	18	20	12	16	16	18
Combi-flail (option)	-	-	-	16	16	18	20	12	12	16	18
Transport width (cm)	261	286	316	275	299	329	349	247	272	297	327
Offset from tractor middle line											
Fixed headstock (fitted as standard on KT models)	-	-	-	143	168	150	160	-	-	-	-
Minimum (cm)	88	113	143	115	140	122	132	91	116	141	123
Maximum (cm)	135	160	190	172	197	180	190	148	173	198	180
Cutting height (cm)	3 - 13			2 - 11				2 - 11			
Weight (kg)	930	975	1020	900	970	1030	1095	100	1030	1120	1200



Flex-flails:
Flexible suspension, specially designed for terrain with a lot of (large) stones.



Combi-flail:
Large impact force (2.7 kg) combined with a replaceable and permanently sharp cutting edge. Optimal mowing height for all crops or on all terrains.

FLAIL MOWERS

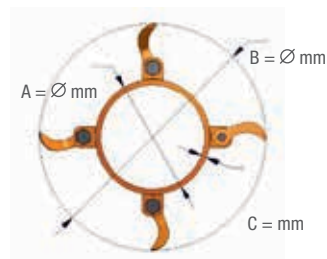
Series	ZW				ZF2			
Models	ZW-150	ZW-180	ZW-210	ZW-240	ZF2-150	ZF2-180	ZF2-210	ZF2-240
Working width (cm)	150	180	210	240	210	150	180	220
Usage capacity								
Headstock standard (options)	3-point rear (front)				3-point rear (front)			
Tractor coupling system (cat.)	II	II	II	II	II	II	II	II
Speed (rpm)								
PTO shaft	540	540	540	540	1000	1000	1000	1000
Flail shaft	2075	2075	2075	2010	2230	2230	2230	2230
Flail shaft								
Diameter A (mm)	140	140	140	160	140	140	140	160
Diameter B (mm)	407	407	407	427	407	407	407	427
Wall strength C (mm)	12,5	12,5	12,5	12,5	12,5	12,5	12,5	12,5
Number of V-belts	3	3	3	4	Powerband (five-fold)			
V-belt tensioner	bolt	bolt	bolt	bolt	automatic	automatic	automatic	automatic
Minimum tractor power (kW/HP)	37/50	44/60	51/70	59/80	44/60	50/68	55/75	65/88
Flails (number)								
0.9 kg (standard)	16	18	22	24	16	18	22	24
Flex-flails (option)	32	40	48	54	-	-	-	-
2.2 kg (option)	-	-	-	-	9	12	12	16
Combi-flail (option)	-	-	-	-	9	12	12	16
Transport width (cm)	140	140	140	140	187	187	187	187
Offset from tractor middle line								
Minimum (cm)	115	145	175	205	255	285	315	345
Maximum (cm)	125	255	285	315	325	355	385	415
Articulation range °	+90° to -60°				+90° to -65°			
Cutting height (cm)	1 - 12				2 - 9			
Weight (kg)	735	780	825	900	900	950	1020	1080

Series	RX	KX-860 Series	
Models	RX-620	Side Mowers	Central Mower
Total working width (cm)	620	860	
Working width per unit (cm)	2 x 320	2 x 320	2 x 270
Usage capacity			
Headstock standard (options)	3-point rear (pulled)	3-point rear (+ front)	
Tractor coupling system (cat.)	III	III	III
Speed (rpm)			
PTO shaft	1000	1000	1000
Flail shaft	1750	1750	1850
Flail shaft			
Diameter A (mm)	273	273	219
Diameter B (mm)	540	540	485
Wall-thickness C (mm)	12,5	12,5	10
Number of V-belts	5	5	4
V-belt tensioning	automatic	automatic	automatic
Minimum tractor power (kW/HP)	110/150	185/250	
Flails (number)			
2.2 kg (standard)	20	20	16
Combi-flail (option)	20	20	16
0.9 kg (option)	32	32	28
Transport width (cm)	248	296	
Cutting height (cm) (3 point)	2 - 11	2 - 11	
Weight (kg)	3900	4130	

Flail mounting

PERFECT flails are attached to the electronically balanced flail shaft with heavy 20-mm bolts.

Replacing the flail ears always destabilises the flail shaft. PERFECT flail ears contain a replaceable hard steel tube, which means that they never have to be completely dismantled and replaced if the unit is used normally. This unique feature is an important factor in guaranteeing the long lifespan of PERFECT flail mowers and shredders (fitted on all units except for Flex-flails and Junior models).



Van Wamel B.V.

Van Wamel B.V.
 Energieweg 1 | 6658 AE
 Beneden-Leeuwen
 (Netherlands)
www.vanwamel.nl
perfect@vanwamel.nl

Your PERFECT dealer: